



WASI[®]



NORM

NAVRTKE

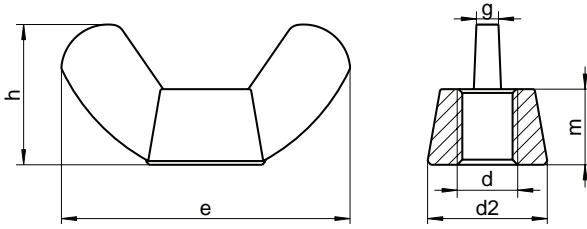
50 YEARS

EXCELLENCE IN STAINLESS STEEL
EXCELLENCE IN STAINLESS STEEL

similar DIN 315 AF

Wing nuts

american type



d	m	h	e	d2	g
M3	2,4	8,8	15,3	6,8	1,2
M4	2,9	8,8	17,6	8,0	1,6
M5	4,1	10,5	22,5	10,3	2,1
M6	5,1	12,9	27,8	12,7	2,5
M8	5,6	14,8	30,3	13,8	2,8
M10	6,8	17,3	36,2	16,5	3,3
M12	9,0	22,3	49,4	22,5	4,5
M14	10,0	30,8	52,7	26,0	6,0
M16	10,7	30,8	58,3	26,6	6,3
M18	12,2	31,2	66,5	29,3	7,2
M20	12,2	31,2	66,5	29,3	7,2

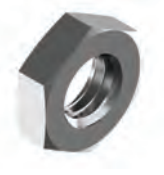
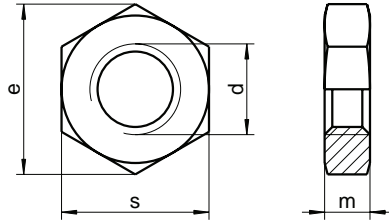
Grade	SU
▲●	100
▲●	100
▲●	100
▲●	100
▲●	100
▲●	100
▲●	50
▲●	50
▲●	20
▲●	10
▲●	10

■ A1 / ▲ A2 / ● A4 | SU: Sales unit | All measurements in mm | Other dimensions on request.
 Example item no. 315-2-8AF DIN 315 - A2 - M8 - american form

sim. ISO 4035 - **DIN 439**

Hexagon nuts

thin type, type B, with chamfer



d	m min.	s	e	⌀
M1,6	0,75	3,2	3,48	3,2
M2	0,95	4	4,32	4
M2,3	0,95	4,5	5,20	4,5
M2,5	1,35	5	5,45	5
M2,6	1,35	5	5,80	5
M3	1,55	5,5	6,01	5,5
M4	1,95	7	7,66	7
M5	2,45	8	8,79	8
M6	2,90	10	11,05	10
M8	3,70	13	14,38	13
M10	4,70	17	18,90	17
M12	5,70	19	21,10	19
M14	6,42	22	24,49	22
M16	7,42	24	26,75	24
M18	8,42	27	29,56	27
M20	9,10	30	32,95	30
M22	9,90	32	35,03	32
M24	10,90	36	39,55	36
M27	12,40	41	45,20	41
M30	13,90	46	50,85	46
M33	15,40	50	55,37	50
M36	16,90	55	60,79	55
M39	18,20	60	66,44	60
M42	19,70	65	71,30	65
M45	21,20	70	76,95	70
M48	22,70	75	82,60	75

Grade	SU
▲●	1000
▲●	1000
▲●	1000
▲●	1000
▲●	1000
▲●	1000
▲●	1000
▲●	1000
▲●	1000
▲●	1000
▲●	200
▲●	200
▲●	200
▲●	100
▲●	100
▲●	50
▲●	50
▲●	25
▲●	25
▲●	25
▲●	25
▲●	10
▲●	10
▲●	10
▲●	10
▲●	10
▲●	10

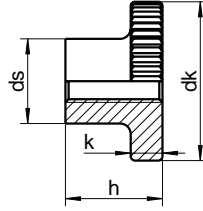
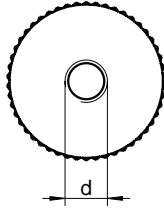
■ A1 / ▲ A2 / ● A4 | SU: Sales unit | All measurements in mm | Other dimensions on request.

Example item no. 439-2-8 DIN 439 - A2 - M8

DIN 466

Knurled thumb nuts

high type



d	dk	ds	h	k
M2,5	11	5	6,5	2,5
M3	12	6	7,5	2,5
M4	16	8	9,5	3,5
M5	20	10	11,5	4,0
M6	24	12	15,0	5,0
M8	30	16	18,0	6,0
M10	36	20	23,0	8,0

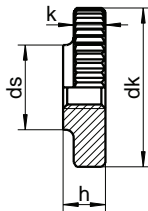
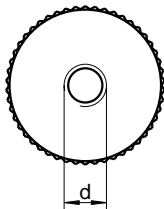
Grade	SU
■	100
■	100
■	100
■	50
■	50
■	25
■	25

■ A1 / ▲ A2 / ● A4 | SU: Sales unit | All measurements in mm | Other dimensions on request.
 Example item no. 466-2-8 DIN 466 - A2 - M8

DIN 467

Knurled thumb nuts

thin type



d	dk	ds	h	k
M2,5	11	5	3	2,5
M3	12	6	3	2,5
M4	16	8	4	3,5
M5	20	10	5	4,0
M6	24	12	6	5,0
M8	30	16	8	6,0
M10	36	20	10	8,0

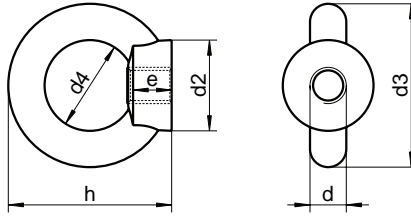
Grade	SU
■	100
■	100
■	100
■	50
■	50
■	25
■	25

■ A1 / ▲ A2 / ● A4 | SU: Sales unit | All measurements in mm | Other dimensions on request.

Example item no. 467-2-8 DIN 467 - A2 - M8

DIN 582

Lifting eye nuts



d	d2	d3	d4	h	e
M6	16	27	16	31	8,0
M8	20	36	20	36	8,5
M10	25	45	25	45	10,0
M12	30	54	30	53	11,0
M16	35	63	35	62	13,0
M20	40	72	40	71	16,0
M27	65	108	60	109	22,0
M30	65	108	60	109	25,0
M36	75	126	70	128	30,0

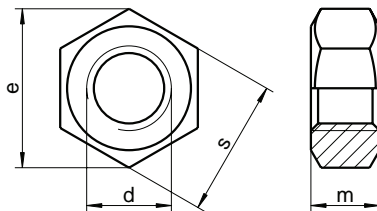
Grade	SU
▲●	25
▲●	25
▲●	25
▲●	25
▲●	10
▲●	10
▲●	1
▲●	1
▲●	1

■ A1 / ▲ A2 / ● A4 | SU: Sales unit | All measurements in mm | Other dimensions on request.

Example item no. 582-2-8 DIN 582 - A2 - M8

DIN 934 - sim. ISO 4032

Hexagon nuts



d	m min.	s	e	
M1,4	0,95	3	3,28	3
M1,6	1,05	3,2	3,41	3,2
M1,7	1,15	3,5	3,82	3,5
M2	1,35	4	4,32	4
M2,3	1,55	4,5	4,88	4,5
M2,5	1,75	5	5,45	5
M2,6	1,75	5	5,45	5
M3	2,15	5,5	6,01	5,5
M3,5	2,55	6	6,58	6
M4	2,90	7	7,66	7
M5	3,70	8	8,79	8
M6	4,70	10	11,05	10
M7	5,20	11	12,12	11
M8	6,14	13	14,38	13
M10	7,64	17	18,90	17
M12	9,64	19	21,10	19
M14	10,30	22	24,49	22
M16	12,30	24	26,75	24
M18	14,30	27	29,56	27
M20	14,90	30	32,95	30
M22	16,90	32	35,03	32
M24	17,70	36	39,55	36
M27	20,70	41	45,20	41
M30	22,70	46	50,85	46
M33	24,70	50	55,37	50
M36	27,40	55	60,79	55
M39	29,40	60	66,44	60
M42	32,40	65	71,30	65
M45	34,40	70	76,95	70
M48	36,40	75	82,60	75
M52	40,40	80	88,25	80
M60	46,40	90	99,21	90
M64	49,10	95	104,86	95

Grade	SU
▲●	1000
▲●	1000
▲●	1000
▲●	1000
▲●	1000
▲●	1000
▲●	1000
▲●	1000
▲●	1000
▲●	1000
▲●	1000
▲●	500
▲●	500
▲●	200
▲●	100
▲●	100
▲●	50
▲●	50
▲●	50
▲●	25
▲●	25
▲●	25
▲●	25
▲●	25
▲●	10
▲●	10
▲●	10
▲●	10
▲●	5
▲●	5
▲●	1
▲●	1
▲●	1

■ A1 / ▲ A2 / ● A4 | SU: Sales unit | All measurements in mm | Other dimensions on request.

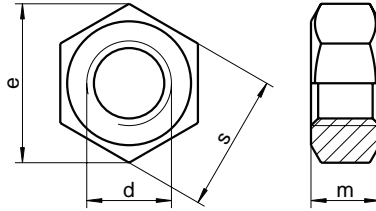
Example item no. 934-2-10 DIN 934 - A2 - M10

Hexagon nuts DIN 934 with fine pitch thread, left hand thread as well as UNC/UNF, with AD2000-W2 and made of special materials can be found on the following pages. Please note that nuts according to DIN 934 up to M24 will be delivered as standard in A2-70 and A4-80. The material A2-80 can be found on one of the following pages in this catalogue. Hexagon nuts with changed wrench sizes according to ISO 4032 can be found on the following pages.

DIN 934 left hand thread

Hexagon nuts

with left hand thread



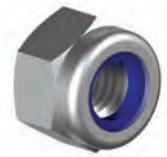
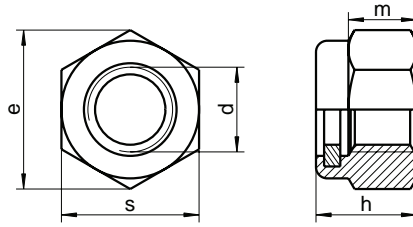
d	m min.	s	e	⌀
M3	2,15	5,5	6,01	5,5
M4	2,90	7	7,66	7
M5	3,70	8	8,79	8
M6	4,70	10	11,05	10
M8	6,14	13	14,38	13
M10	7,64	17	18,90	17
M12	9,64	19	21,10	19
M14	10,30	22	24,49	22
M16	12,30	24	26,75	24
M18	14,30	27	29,56	27
M20	14,90	30	32,95	30
M22	16,90	32	35,03	32
M24	17,70	36	39,55	36
M27	20,70	41	45,20	41
M30	22,70	46	50,85	46

Grade	SU
▲●	100
▲●	100
▲●	100
▲●	100
▲●	100
▲●	100
▲●	50
▲●	50
▲●	25
▲●	25
▲●	25
▲●	25
▲●	25
▲●	10
▲●	10

■ A1 / ▲ A2 / ● A4 | SU: Sales unit | All measurements in mm | Other dimensions on request.

Example item no. 934-2-8LI DIN 934 - A2 - M8 - left hand thread

sim. ISO 10511 - **DIN 985**
Prevailing torque type hexagon nuts
 with non-metallic insert, thin type



d	m	h	s	e	⌀
M2,5	3,5	2,3	5	5,50	5
M3	2,4	2,4	5,5	6,01	5,5
M4	2,9	2,9	7	7,66	7
M5	3,2	3,2	8	8,79	8
M6	4,0	6,0	10	11,05	10
M8	5,5	8,0	13	14,38	13
M10	6,5	10,0	17	18,90	17
M12	8,0	12,0	19	21,10	19
M14	9,5	14,0	22	24,49	22
M16	10,5	16,0	24	26,75	24
M18	13,0	18,5	27	29,56	27
M20	14,0	20,0	30	32,95	30
M22	15,0	22,0	32	35,03	32
M24	15,0	24,0	36	39,55	36
M27	17,0	27,0	41	45,20	41
M30	19,0	30,0	46	50,85	46
M33	22,0	33,0	50	55,37	50
M36	25,0	36,0	55	60,79	55

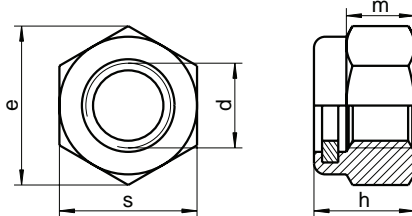
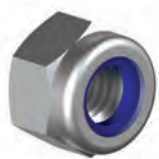
Grade	SU
▲●	1000
▲●	1000
▲●	1000
▲●	1000
▲●	500
▲●	200
▲●	100
▲●	100
▲●	100
▲●	50
▲●	50
▲●	50
▲●	25
▲●	25
▲●	25
▲●	25
▲●	25
▲●	25
▲●	25

■ A1 / ▲ A2 / ● A4 | SU: Sales unit | All measurements in mm | Other dimensions on request.
 Example item no. 985-2-8 DIN 985 - A2 - M8

DIN 985 fine thread

Prevailing torque type hexagon nuts

with fine thread and non-metallic insert, thin type



d	m min.	h	s	e min.	⦿
M8X1	5,5	8	13	14,38	13
M10X1	6,5	10	17	18,90	17
M12X1,5	8,0	12	19	21,10	19
M16X1,5	10,5	16	24	26,75	24
M20X1,5	14,0	20	30	32,95	30
M24X1,5	15,0	24	36	39,55	36

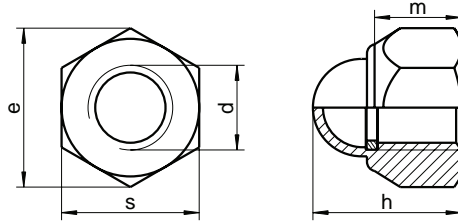
Grade	SU
▲●	200
▲●	100
▲●	100
▲●	50
▲●	50
▲●	25

■ A1 / ▲ A2 / ● A4 | SU: Sales unit | All measurements in mm | Other dimensions on request.

Example item no. 985-2-8X1 DIN 985 - A2 - M8 - pitch = 1 mm

DIN 986

Prevailing torque type hexagon domed cap nuts with non-metallic insert



d	m	h	s	e	⌀
M4	2,90	9,6	7	7,66	7
M5	4,40	10,5	8	8,79	8
M6	4,90	12,0	10	11,05	10
M8	6,44	14,0	13	14,38	13
M10	8,04	18,1	16	18,90	16
M12	10,37	22,5	18	21,10	18
M14	12,10	26,4	21	23,35	21
M16	14,10	27,5	24	26,75	24

Grade	SU
▲	200
▲	200
▲	200
▲	100
▲	100
▲	100
▲	100
▲	50

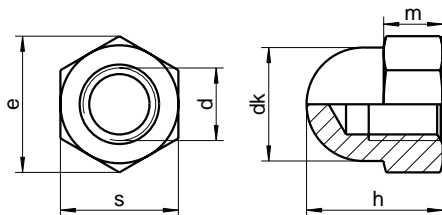
■ A1 / ▲ A2 / ● A4 | SU: Sales unit | All measurements in mm | Other dimensions on request.

Example item no. 986-2-8 DIN 986 - A2 - M8

DIN 1587

Hexagon domed cap nuts

high type



d	m	h	s	e	dk	⬠
M3	2,4	7	5,5	6,01	5,5	5,5
M4	3,2	8	7,0	7,66	6,5	7,0
M5	4,0	10	8,0	8,79	7,5	8,0
M6	5,0	12	10,0	11,05	9,5	10,0
M8	6,5	15	13,0	14,38	12,5	13,0
M10	8,0	18	17,0	18,90	16,0	17,0
M12	10,0	22	19,0	21,10	18,0	19,0
M14	11,0	25	22,0	24,49	21,0	22,0
M16	13,0	28	24,0	26,75	23,0	24,0
M18	15,0	32	27,0	30,14	26,0	27,0
M20	16,0	34	30,0	33,53	28,0	30,0
M22	18,0	39	34,0	37,72	33,0	34,0
M24	19,0	42	36,0	39,98	34,0	36,0
M27	20,0	47	41,0	47,30	40,0	41,0
M30	24,0	52	46,0	52,00	42,0	46,0

Grade	SU
▲●	1000
▲●	1000
▲●	1000
▲●	500
▲●	200
▲●	100
▲●	100
▲●	50
▲●	50
▲●	25
▲●	25
▲●	10
▲●	10
▲●	10
▲●	10

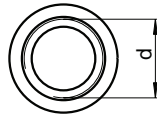
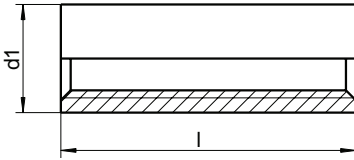
■ A1 / ▲ A2 / ● A4 | SU: Sales unit | All measurements in mm | Other dimensions on request.

Example item no. 1587-2-8 DIN 1587 - A2 - M8

WS 9290

Round coupler nuts

with full length thread



d1	10	11	13	15	22	28
Length / Ø	M6	M8	M10	M12	M16	M20
20	▲ ●	▲ ●				
25	▲ ●	▲ ●	▲ ●			
30	▲ ●	▲ ●	▲ ●	▲ ●		
35		▲ ●	▲ ●	▲ ●		
40		▲ ●	▲ ●	▲ ●	▲ ●	
50		▲ ●	▲ ●	▲ ●	▲ ●	▲ ●
SU	100	100	100 ≥ 40 50	50	25	25

■ A1 / ▲ A2 / ● A4 | SU: Sales unit | All measurements in mm | Other dimensions on request.

Example item no. 9290-2-8X40 WS 9290 - A2 - M8 - l = 40mm